

# ESCONDIDO PLAN 1547 sq ft



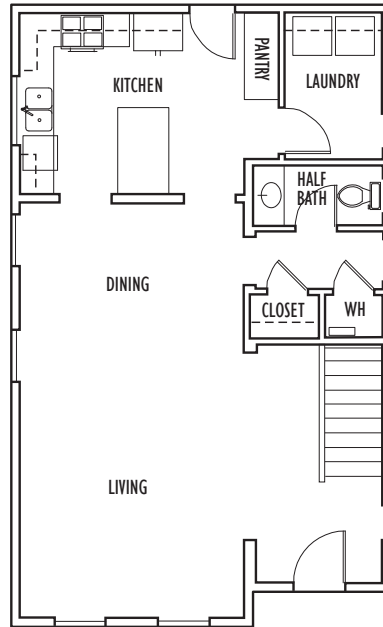
Plan I



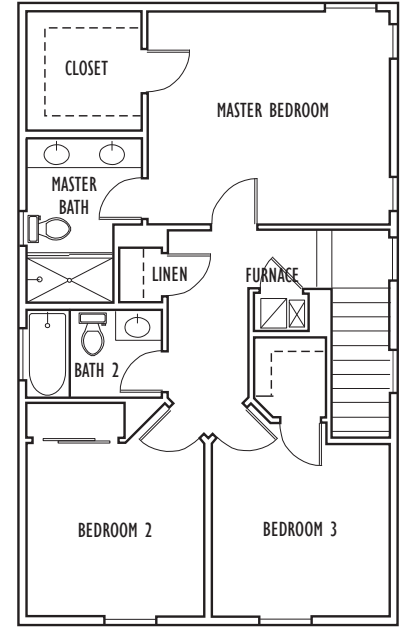
Plan II



Plan III



First Floor



Second Floor

**A gorgeous**, two-story home featuring great exterior details and warm, inviting colors. The sunny great room opens through a set of arches to a spacious kitchen featuring large breakfast bar and pantry. A nice-sized laundry room, half bath and coat closet finish off the downstairs. On the second floor, the master suite includes a double vanity and large walk-in closet. An additional two bedrooms, full bath and linen complete this space.

Designer finishes and touches are evident throughout this beautiful home. The kitchen includes attractive wood cabinetry, granite countertops, and GE® stainless appliances. Two car garage may be attached or detached depending on lot shape and size. This home is located close to schools and has easy freeway access.



**NINO HOMES**  
WWW.NINOHOMES.COM

*Neighbors Building Neighborhoods*

Sales Office: (831) 902-9945

RRenderings are artist's conceptions; actual homes may vary. Floor plans differ by elevation, Plan I is drawn. Square footage listed is approximate. Builder reserves the right to make changes deemed necessary CA BRE #01360170 © Nino Homes 2018. All rights reserved.